



LOV

Lincolnshire
One Venues

“ LOV HAS DEVELOPED A BRAND NEW WAY OF WORKING – WE CHALLENGE HOW VENUES AND CULTURAL ORGANISATIONS WORK TOGETHER TO BECOME STRONGER, COHESIVE AND MORE ADAPTABLE IN THE CURRENT ECONOMIC CLIMATE. ”

- EMILY BOWMAN, PROJECTS MANAGER

WHAT IS LOV?

LOV is a network of eleven visual and performing arts centres in Lincolnshire. Established in 2010, the overall vision of LOV is to bring people the very best in arts and culture by working together to support, sustain and develop the arts and arts venues across the predominantly rural county of Lincolnshire.

The membership is made up of:

- The Collection & Usher Gallery, Lincoln
- Guildhall Arts Centre, Grantham
- Louth Playgoers Riverhead Theatre
- Lincoln Drill Hall
- Lincoln Performing Arts Centre (LPAC)
- National Centre for Craft and Design, Sleaford
- Terry O'Toole Theatre, North Hykeham
- Trinity Arts Centre, Gainsborough
- Stamford Arts Centre
- South Holland Centre, Spalding
- The Embassy Theatre, Skegness

The network initially secured funding from Arts Council England and The Paul Hamlyn Foundation to develop a Young People's Programme. Following its success, the network received additional funding from Arts Council England and The Paul Hamlyn Foundation and secured support from Esmée Fairbairn Foundation, Youth Music and The Film Hub Central East to continue to deliver the diverse programme.

“ LOV HAS BEEN A VERY EMPOWERING THING. IT IS DIFFICULT TO REMEMBER HOW ISOLATED & UNDERVALUED WE FELT IN THE ARTS SECTOR IN LINCOLNSHIRE BEFORE ”

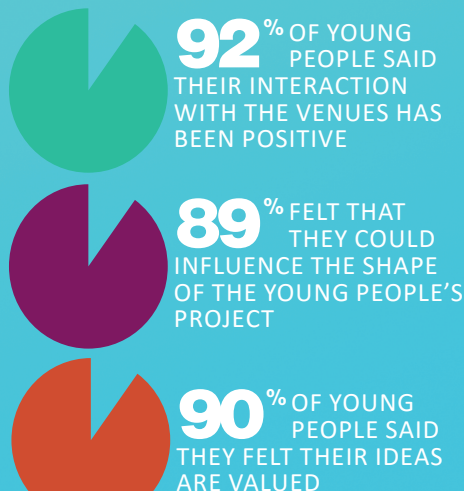
- VENUE MANAGER

WHO WE HAVE ENGAGED

- 7300** YOUNG AUDIENCE MEMBERS
- 4570** YOUNG PARTICIPANTS AND PERFORMERS
- 456** DECISION MAKERS
- 17** INTERNSHIPS
- 8** APPRENTICESHIPS
- 8** WORK PLACEMENTS

DATA COLLECTED BETWEEN 2012-2016

WHAT OUR YOUNG PEOPLE SAY



OUR FUNDERS



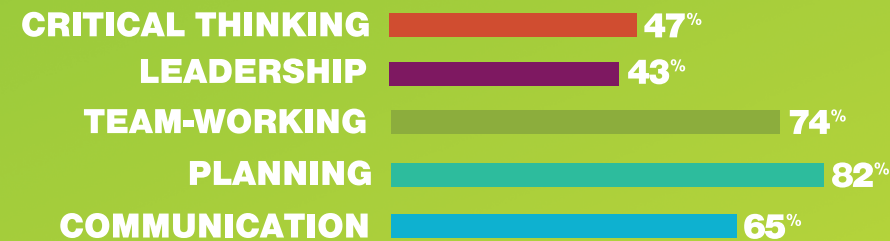
LOV YOUNG PEOPLE'S PROGRAMME

At the heart of the LOV Young People's Programme (LOVYPP) is a desire to deepen Young People's engagement with the arts, create genuine responses and increase their influence within the venues in line with their ideas, needs and expectations.

We are working with the venues to increase opportunities for young

people as audience members, participants and decision makers. This includes opportunities for young people to commission creative practitioners, to produce new work with and for young people as well as skills development for young people interested in becoming involved in the governance and programming of the venues.

THE SKILLS OUR YOUNG PEOPLE HAVE DEVELOPED



LOVPP is delivered across the venues by a skilled Project Team and overseen by a Projects Manager who also supports the development of the wider network.



WHAT WE HAVE DELIVERED

- 1475** DECISION MAKING SESSIONS
- 538** ARTIST-LED WORKSHOPS & MASTERCLASSES
- 233** YOUTH-LED EVENTS

LOV PROGRESSION ROUTES

- In order to offer our young participants clear progression and development through the programme LOV created a simple progression plan to ensure all the young people engaged in the programme get what they want from being part of LOV. This is evaluated regularly to keep in tune with the developing needs of our young participants.

LOV INTRODUCES AN INTRODUCTION TO LOV

FIND LOV ACCESS MENTORING & PROFESSIONAL PROGRAMMING

FIRST LOV JOIN A DECISION MAKING GROUP IN A LOV VENUE

KNOW LOV APPLY FOR A LOV INTERNSHIP OR BURSARY

ALL YOU NEED IS LOV JOIN THE LOVYPP STEERING GROUP. HAVE YOUR WORK COMMISSIONED

TRUE LOV BECOME A LOV ADVOCATE, STUDY FURTHER OR BUILD AN ARTS CAREER.

“ LOV HAS NOT ONLY HELPED ME GROW ON A PERSONAL LEVEL BUT ALSO PROFESSIONALLY, SOME OF MY BEST PERSONAL ACHIEVEMENTS HAVE COME THROUGH MY WORK WITH LOV AND THIS HAS HELPED ME BUILD A VERY RESPECTABLE CV ”

- MATT RAISTRICK, PARTICIPANT

PARTNERS WE HAVE WORKED WITH



THE FUTURE OF LOV

LOV are committed to working together to achieve a series of ambitious and innovative outcomes. These outcomes will bring benefits to the young people of Lincolnshire, enhance the cultural offer of the county, influence the wider cultural sector and highlight a new way of working for rural arts venues.

LOV 2015 - 2018

OUTCOME 1:

THE WIDER LOCAL, REGIONAL & NATIONAL ARTS & CULTURAL SECTOR

To have tested the 'LOV model' within another rural context to create evidence so that Lincolnshire and LOV can be seen as a national benchmark and positioned at the centre of local policy change and cultural development and delivery in Lincolnshire, with an increased awareness of the network local, regional and national stakeholders.

LOCAL,
REGIONAL
& NATIONAL
PROFILE

JOINT
PR &
CLEAR
VISION

OUTCOME 2:

LOCAL YOUNG PEOPLE (& COMMUNITIES)

Young people in Lincolnshire aged 12 – 25 years will have increased opportunities to participate in arts activities independently and through formal education, they will be commissioning and programming professional work for LOV; being supported to access progression routes and alternative skills development within the creative industries through workshops, training and mentoring within the venues.

PARTICIPATE

PROGRAMME

EDUCATION

COMMISSIONS
& BURSARIES

ARTIST-LED
PROJECTS

YP LED
EVENTS &
PROFESSIONAL
PROGRAMMING

TEACHER CPD

WORKSHOPS
& CREATIVE
INDUSTRY
TRAINING

OUTCOME 3:

THE LOV NETWORK MEMBERS

The LOV Model will be fully established, securing further funding and resources for its continued development. We will have created a genuine change in working practices by the venues; with joint programming across the network and young people as an integral part of the venues' governance and engagement practices.

'TEST' THE
LOV MODEL

CDP FOR
STAFF

NATIONAL
PARTNERSHIP

SHARING
LEARNING

INTERNAL &
EXTERNAL
REVIEW